



This piece is inspired by the history and beauty of Beacon Hill. The loose fish net knit is inspired by the fishermen who have fished along the shores for years, the lace edging is inspired by the elegance of the central gardens that attract so many people both tourists and locals. It is knit with just one skein of Indigo Moons Hand dyed silk yarn, there was even a generous amount left over. It is a very simple knit, worked on 1mm and 3mm needles.

This pattern is worked across the body from one sleeve to the other.

Sizes (Bust): S(34), M(36), L(38)



Beacon

BLUE

Design:

Bronwyn Zozula bronwyn.zozula@gmail.com

basketkid.com

Notions

3mm 16 inch circular needles/ dpn's
1mm 32 inch circular needles and dpn's
Stitch markers
1 skein of Indigo Moons Hand dyed silk yarn, **lace weight (2ply)**, 620 yards (567 meters)

Gauge

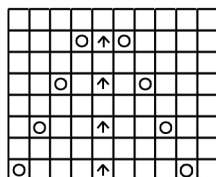
15 sts to 18 rows = 4 inches on 3mm needles in the Fishnet Lace Pattern.

Fishnet Lace

Rnd 1: "yo, K1" repeat to end
Rnd 2: "K2tog" repeat to end

Lace Edge

- KS: Knit Stich
- YO: Yarn Over
- ⬆ Slip first & second stitch as if to knit, knit one stitch. Pass two slipped stitches over the knit stitch.



Elastic Cast Off Method

Knit 2, insert the left hand needle into the front of the two stitches on the right hand needle. K2tbl (knit 2 together through the back loop). You are now left with one stitch on the right hand needle. Continue casting off by repeating k1, k2tbl.

Sleeve

Using 3mm needles cast on 90 sts work in Fish net lace for 7 rnds.

8th rnd: yo, K1, yo, K2tog, *yo K1* repeat to last 3 sts, yo, ssk, yo, K1.

Continue until sleeve measures 6 inches, repeating decrease every 8th round 7 times, 76 sts.

Arm Hole decrease: On the next rnd, cast off 8 sts at the beginning and end of row.

Body

Rejoin yarn on wrong side of work. P2tog to last 4 stitches, P 4.

Row 1: Yo, K1 con't to end.

Row 2: P2tog, con't to last 4 stitches, P 4.

Work these two rows for 8 (9, 10) inches, work evenly for the next two inches.

Begin the decreases forming a v like back:

Row 1: Yo, K1 con't to the last 4 stitches, K2tog (twice)

Row 2: P2tog con't to end.

Work these two rows for 8 (9, 10) inches, you should have 60 sts.

Sleeve

Arm Hole increase: Cast on 16 stitches to the active row and join in the round. Return to the original fishnet lace pattern and work for 7 rnds.

8th rnd: k2, K2tog cont to last 2 stitches, K2.

Continue until sleeve measures 6 inches, repeating increase every 8th round.

7 times, 90 sts.

Lace Edging

Using 1mm 32' needles pick up and knit around neck and body edge 200 (216, 232) sts. Work one repeat of the lace edging and cast off using the elastic method.

Using 1mm dpn's pick up and knit 90 sts on each sleeve. Work one repeat of the lace edging and cast of using the elastic method.

Blocking:

Block flat and carefully pin down all edges of lace.

Questions? Contact:

Bronwyn Zozula bronwyn.zozula@gmail.com