

Finishing

Weave in all loose ends. Sew sleeve seams. Sew side seams.

Overlap back collar over front collar at arm by 1 inch, sew the seam together.

Pin and ease sleeves into armholes, and sew together. Block gently.



Lady
Peacock

Design:

Bronwyn Zozula bronwyn.zozula@gmail.com

basketkid.com

Lady Peacock Top







This blouse is worked from the top down, a flattering peacock edging sits across the collarbones and at the shoulder. It overlaps to accentuate the boatneck look, with ribbing on the sleeves and waist. This is a very simple pattern and can easily be increased or decreased in size by adding one repeat to the peacock pattern. Enjoy!

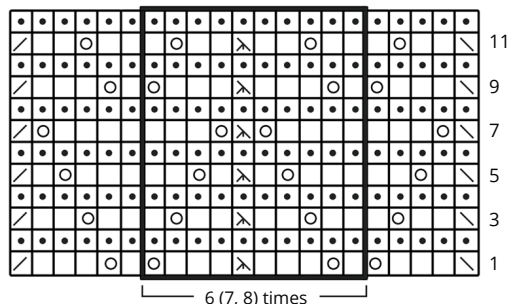
Notions

4 mm needles
5 mm needles
3 balls of Rowan Kidsilk Haze, 2ply, 229 yards (209 meters)

*Knitted Method

Make a slipknot on the left hand needle. Slip the right hand needle into the loop knitwise and knit the stitch, but do not slip the loop off the left needle. Instead, transfer the new stitch from the right needle to the left. Repeat.

-  k
-  k on ws
-  yo
-  k2tog
-  sl 1, k1, pssso
-  sl 1, k2tog, pssso



Front

Using two strands, with the 4mm needles, cast on 71 (81, 91) sts in the knitted method*.

Cut one strand and work with one strand only.

Row 1- 12 work peacock edging.

Row 13 Change to 5mm needles and purl across.

Continue in stockinette stitch for 4 inches.

Armholes: increase 2 stitches on each end of knit row until you have 91 (101,121) sts.

Work in stockinette for 10 inches.

Ribbing: change to 3mm needles. Decrease evenly to 72 (82, 92) sts. Work in 2/ 2 rib for 3 inches.

Bind off in rib.

Back (work as front)

Sleeves

Using 3mm needles cast on 58 (62, 74) sts. Work in 2/ 2 rib for 1 1/2 inches.

In stockinette with 5mm needles, work 11 rows increasing 1 st at each end of 3rd and 4th rows. You should have 66 (68, 82)sts.

Work until sleeve measures 4 inches.

Work next 9 rows decreasing at each end,48 (50, 64) sts.

Work one row even.

Cast off 2 sts at each end of next 8 rows.

Cast off 3 sts at each end of next 10 rows.

Cast off remaining stitches.